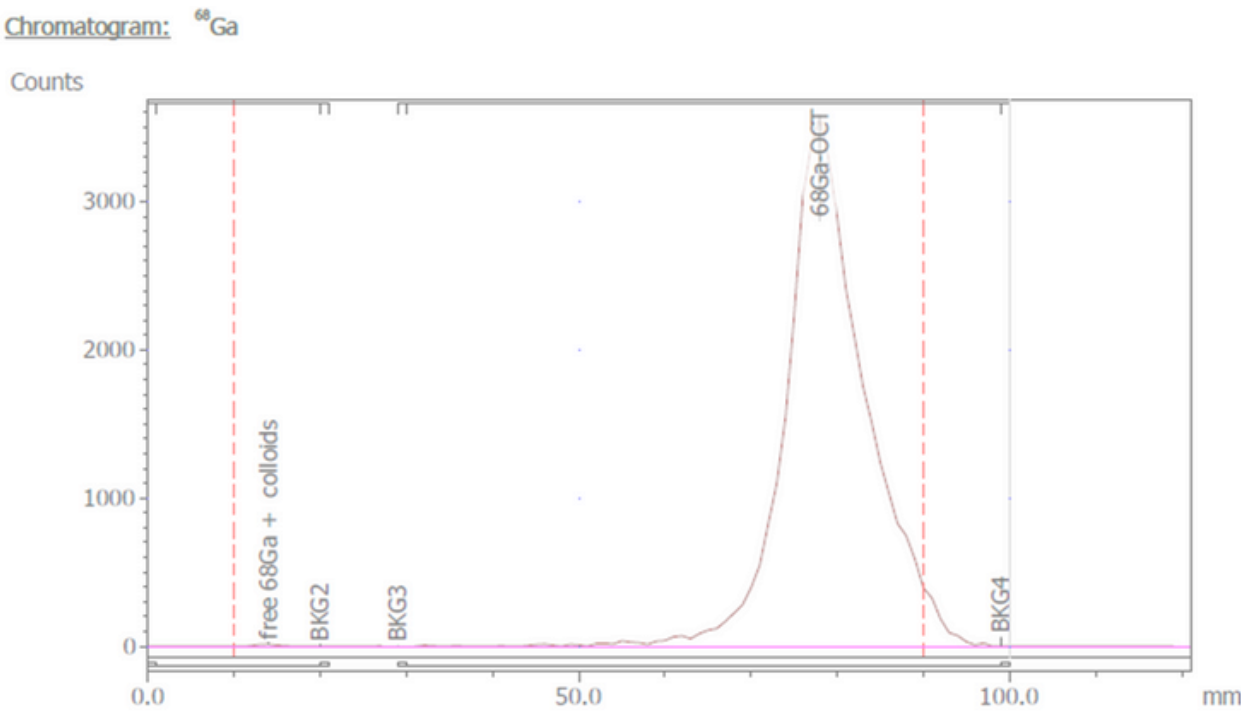


QC Comparison for Ga 68 Radiopharmaceuticals

Case Study

Molpure ITLC Silica Gel (SG TLC-100)

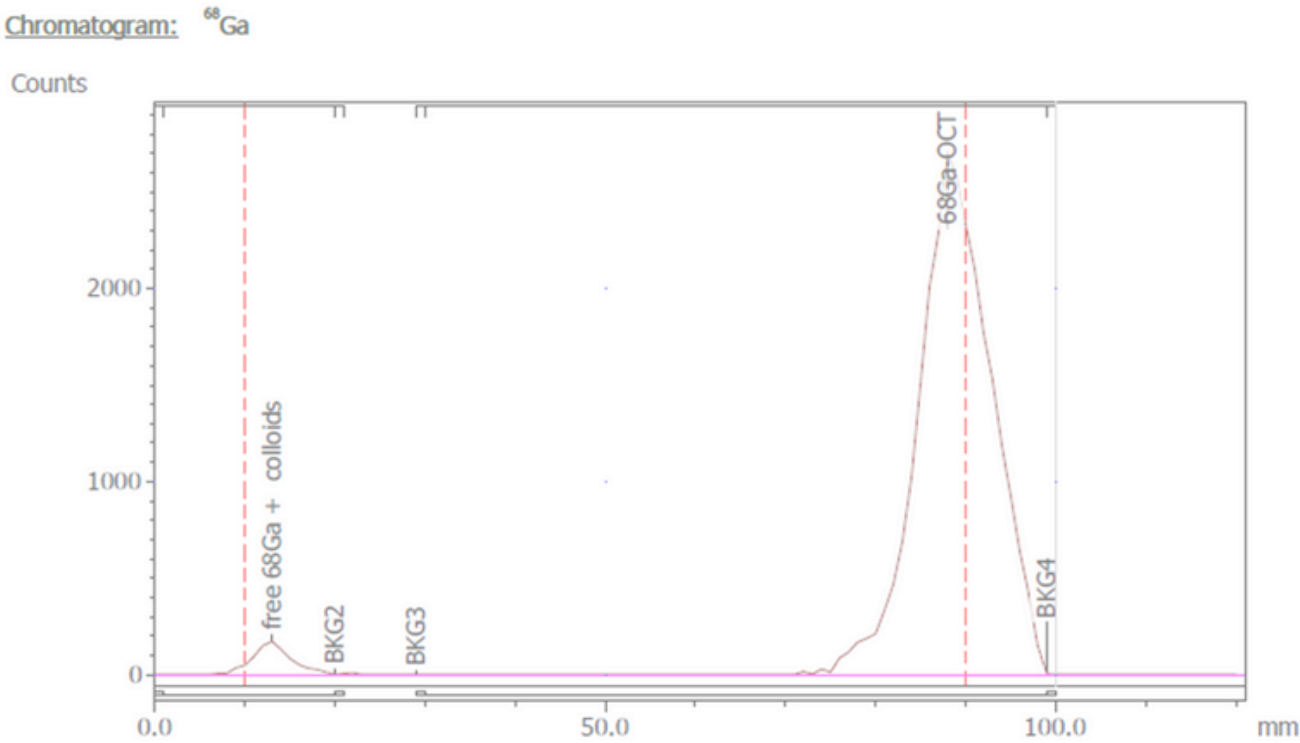


Regions: ⁶⁸Ga

| Name | Retention (RF) | %ROI (%) | FWHM (mm) |
|----------------------|----------------|----------|-----------|
| BKG1 | -0.125 | | |
| free 68Ga + colloids | 0.050 | 0.12 | 3.0 |
| BKG2 | 0.125 | | |
| BKG3 | 0.238 | | |
| 68Ga-OCT | 0.850 | 99.88 | 8.0 |
| BKG4 | 1.113 | | |
| 2 Peaks | | 100.00 | |

Total Area: 37678 Counts
Average Background: 27 Counts

Agilent iTLC-SG



Regions: ⁶⁸Ga

| Name | Retention (RF) | %ROI (%) | FWHM (mm) |
|----------------------|----------------|----------|-----------|
| BKG1 | -0.125 | | |
| free 68Ga + colloids | 0.038 | 3.21 | 4.0 |
| BKG2 | 0.125 | | |
| BKG3 | 0.238 | | |
| 68Ga-OCT | 0.975 | 96.79 | 9.0 |
| BKG4 | 1.113 | | |
| 2 Peaks | | 100.00 | |

Total Area: 26376 Counts
Average Background: 102 Counts

Conclusion: Improved separation and higher resolution with Molpure ITLC strips, which reduce or eliminate baseline artifacts in gallium testing.